

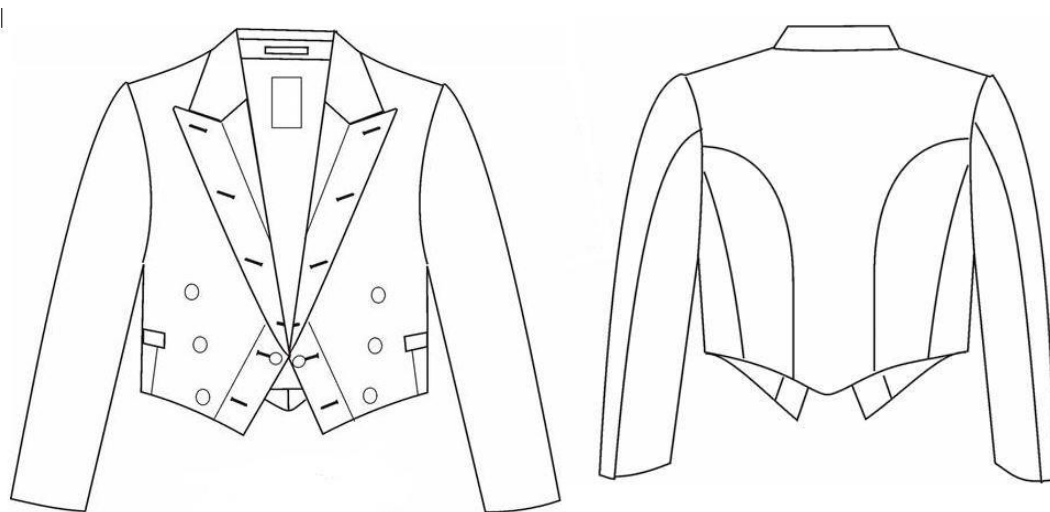
CITY LIVERY YACHT CLUB

MESS DRESS

As the Club is well established, with City and Livery status, the Flag Officers and Committee authorised a Yachting Mess Dress design. This follows in principle the tradition of the senior yacht clubs but has its own distinguishing marks.

Some may think it proper that we should have 'yachting livery' and this meets with that requirement. Opportunity is provided, therefore, for those who so wish to wear it at appropriate yachting functions.

Yachting Mess Dress, like that of the Merchant Navy, is derived from that traditionally associated with the Royal Navy and it is important to avoid errors in style. Therefore, strict rules have been laid down as to the main garments and associated clothing for the best possible guide for Members to follow. For the prestige of the Club, the Committee earnestly requests that those who acquire Mess Dress conform to the more traditional aspects of the rig.



MESS DRESS (details): Dark Navy Blue Mess Jacket cut in the same was as that worn by Officers of the Royal Navy. Peaked at the back with four buttonholes on each lapel and a jettied pocket on each front. Facings to be in the same plain cloth as the external jacket (some yacht clubs have silk facings). Three gilt Club buttons on each breast and if desired to be worn fastened then a pair of similar buttons as link buttons at the waist. There should be a Club device (cap badge) on the widest part of the collar on each side. The sleeves are basically plainly cut but especially ornamented with three flashes of double 3/16" Russia Gold braid having notched holes with Club Gilt Buttons (small). This buttoning and braiding, together with the Collar badges, are the distinguishing marks of our Club's Mess Dress.

Trousers should be cuffless and unbraided and of same material as the jacket (ordinary evening trousers are unsuitable owing to usual back pockets which would be unsightly with the short jacket). A white dress waistcoat having four small gilt buttons should be worn on formal occasions. A stiff white shirt with stiff wing collar must be worn with a black bow tie. Naval Regulations 1968 require plain gold studs on stiff shirts and we recommend that Members do their best to conform by avoiding fancy studs. Soft turnover collars must be prohibited for use with Mess Dress as being un-seaman-like. Shoes should be black evening or equivalent, capless are preferable. For street wear the usual white topped yachting cap is worn with a Club badge.

Alternative trousers could be plain black knee breeches and stockings which may be appropriate on certain special occasions.

Small additions to the cuff ornamentation are made to denote Committee and Flag rank: e.g. one extra button and flash on each sleeve (total 4) denotes a Committee Member. One further button and flash for Rear Commodore (total 5). Then outwards from the top button a further button denotes Vice-Commodore (total 6). A further button on the top flash placed inwards denotes Commodore or Past Commodore (total 7). The Commodore will also wear an aiguillette on the right shoulder.

Members need a total of eight gilt buttons (large) and six gilt buttons (small) plus the small ones needed for waistcoat(s). Buttons and cap badges are obtainable from the Secretary of the Club.

MESS UNDRESS: Same as above but with navy blue waistcoat to match jacket with gilt buttons. A soft fronted (plain) or stiff shirt may be worn but the collar should still be stiff upright wing with black bow tie.

SUPPLEMENTARY:

Members may use gilt anchor buttons as a temporary measure if Club buttons are not readily available.

The Committee would be happy for the partners and offspring of Members to use Club gilt buttons on reefers, dresses, capes etc.

Skippers also may wear gilt Club buttons on reefers but a differentiated cap badge is essential and owners should apply for a design.